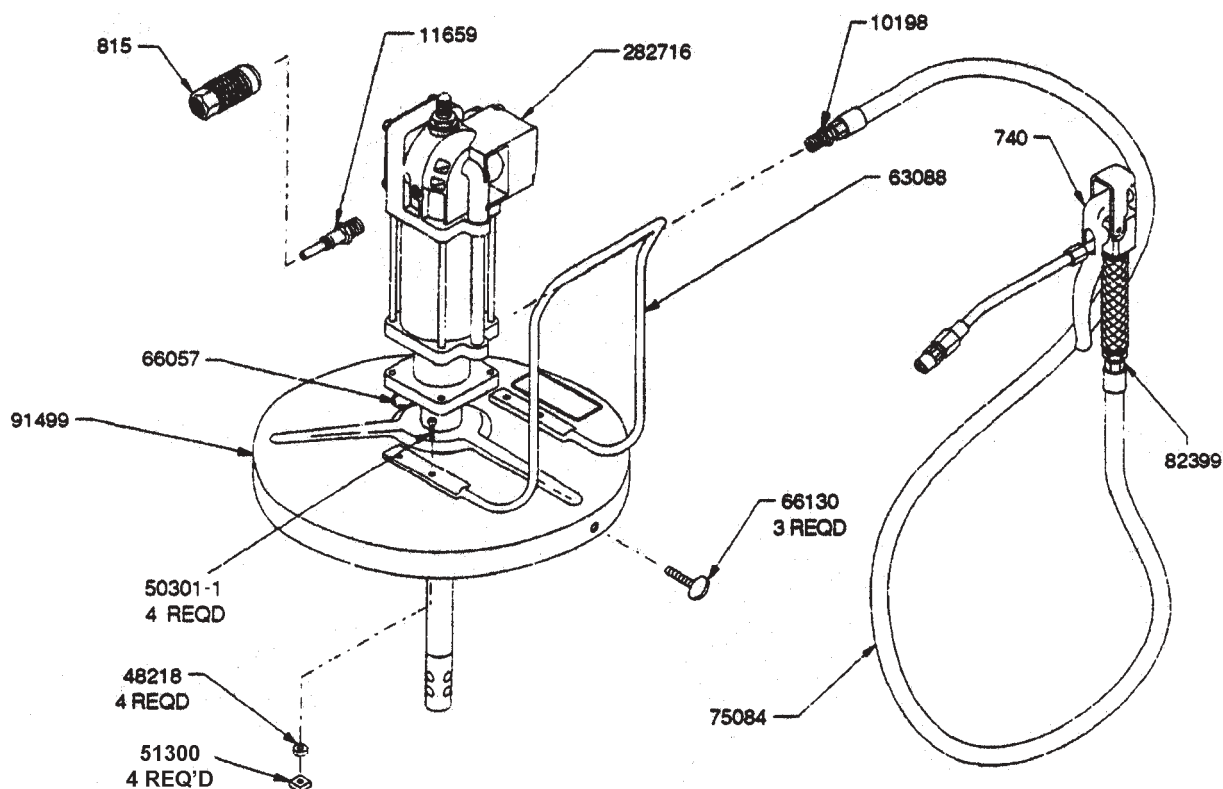




# MODELS 659, 689 - SERIES "A" AIR OPERATED LUBRICATION UNIT 25-50 LB. DRUM SIZE 50:1 RATIO

## OWNERS MANUAL



**NOTE: MODEL 659 COMES WITH 84191 ROLL AROUND BASE.**

### SERVICE PARTS AND OPTIONAL ACCESSORIES

PARTS	QTY	DESCRIPTION
740	1	Control valve
815	1	Air coupler
10198	1	Adapter nipple
11659	1	Air nipple
48218	4	Washer
50301-1	4	Stove bolt
51300	1	Stove bolt nut
63088	1	Handle
66057	1	Snap button
66130	3	Thumb screw
75084	1	High pressure hose
82399	1	Swivel
91499	1	Drum cover
282716	1	Pump

OPTIONS	QTY	DESCRIPTION
81387	1	Universal swivel
84775	1	Follower, for viscous materials

### REFER TO SEPARATE INSTRUCTIONS FOR:

740 Control Valve	Section F3, Page 2 Series
815 Coupler	Section G9, page 2 Series
82399 Swivel	Section F1, Page 2 Series
282716 Pump	Section A5, Page 70 Series



One Lincoln Way  
St. Louis, MO 63120-1578  
Phone 1-314-679-4200  
Fax 1-800-424-5359

Copyright 2003  
Printed in U.S.A.

**Section - A13**  
**Page - 15**

## ASSEMBLY

Assemble handle (63088) to drum cover top with fasteners as shown. Place snap button in hole in drum cover.

If pumping a heavy grease that requires a follower, place an optional follower into the grease in the open drum.

Place drum cover assembly onto drum. Screw in the three thumb screws to secure drum cover to drum.

Place pump through drum cover and through follower if used.

Assemble delivery hose, swivel and control valve as shown. Connections must be tight and leak proof.

Screw air nipple into air motor and attach air coupler to air delivery hose.

Unit is operational when air delivery hose is connected to pump.



## WARNING

READ ALL SAFETY INSTRUCTIONS INCLUDED IN 740  
CONTROL VALVE AND 282716 PUMP OWNERS  
MANUALS. THIS PUMP CREATES PRESSURES UP  
TO 7,500 P.S.I.