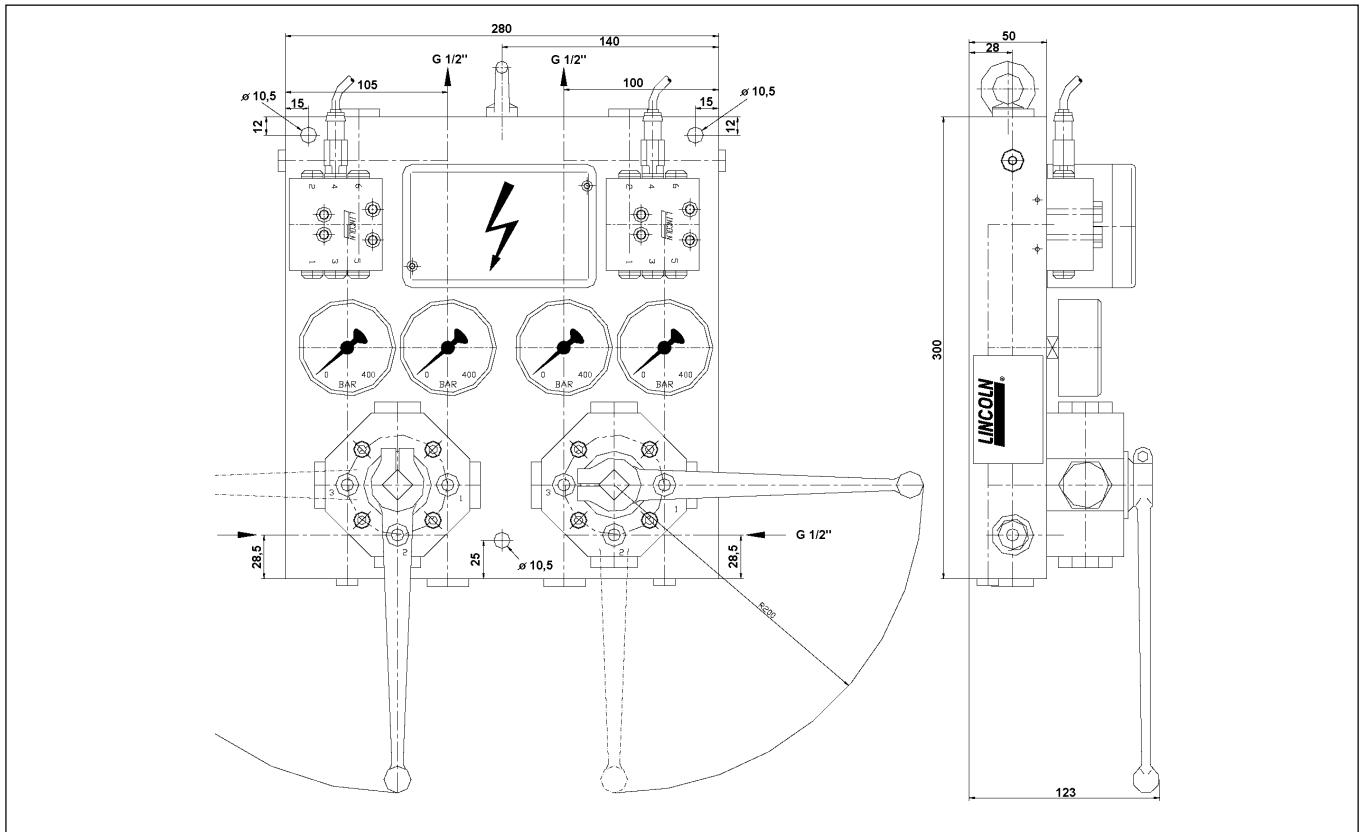


Flow Control, Part No. 632-46106-1



Design

Two progressive divider valves model SSV are mounted on one common mounting plate. During a half-cycle lubricant flows from one of the mainlines through an SSV divider valve while the other mainline can relieve via the check valve. The SSV divider valves are equipped with piston detectors for their electrical control. A drop in pressure can be visually controlled by means of pressure gauges. If a divider valve is to be replaced, the lubricant flow is led through a bypass via the corresponding 3/2 way valve.

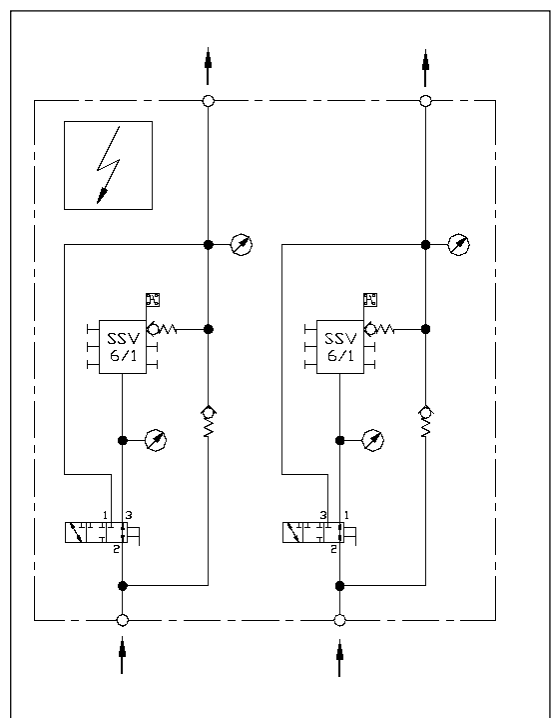
Function

Application in two-line systems to monitor the function and determine the lubricant consumption.

Installation

Into the stub line before a group of two-line metering devices, e.g. segments in continuous casting plants.

Functional Diagram



Technical Data:

Operating pressure: $p_{\max} = 350 \text{ bar}$,
 $p_{\min} = 35 \text{ bar}$
Tube line connections: G 1/2" female
Operating voltage: 10...36 VDC