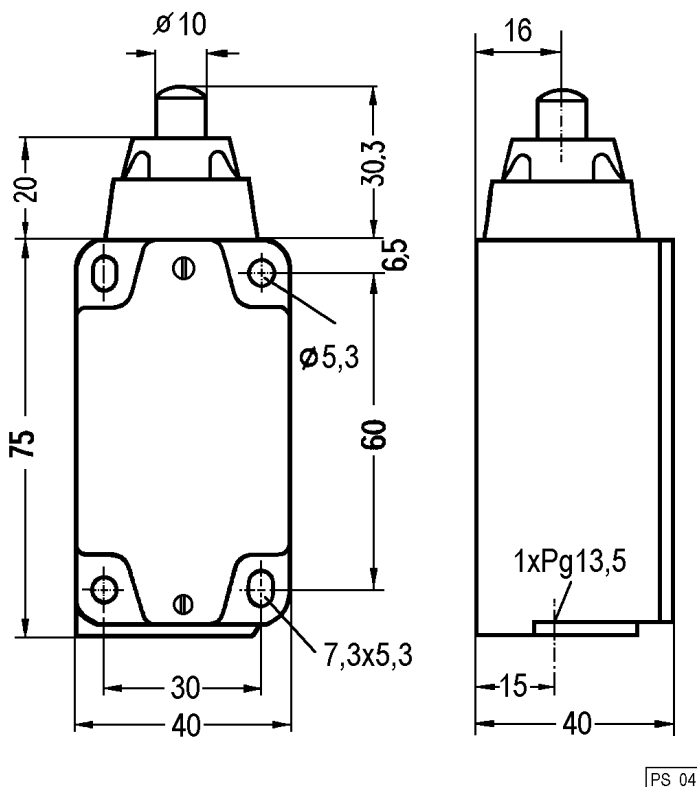
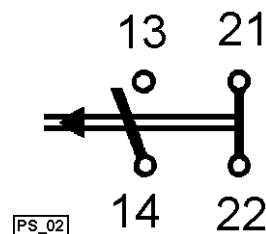


Dimensions



Terminal Connection Diagram



Technical Data

Material of housing	aluminium die cast metal
Type of protection acc. to IEC 529/DIN 40 050	IP67
Incoming line	PG 13,5
Cross-sectional area of connecting cable	max. 2,5 mm ²
	including wire end ferrule max. 1,5 mm ²
Type of connection	screw connection M 3,5
Material of contact	fine silver
Type of contact	1 NO + 1 NC
Switching system	moving double-break contacts
Insulation	acc. to VDE 0110 Group C
Operating temperature	[-40...+85
Rated insulating voltage U _i	[V] 500, 40-60Hz
Continuous current I _{th}	[A] 10
Rated operating current I _e (AC 12)	[A] 10 (230 VAC)
Short circuit strength	[A] 10 (slow) 16(fast)

Design

The housing of aluminium die cast metal is resistant to shocks, impact, hot swarf, etc. The cover is fastened with two screws. The packing of the cover and the ram is resistant to petroleum and oil