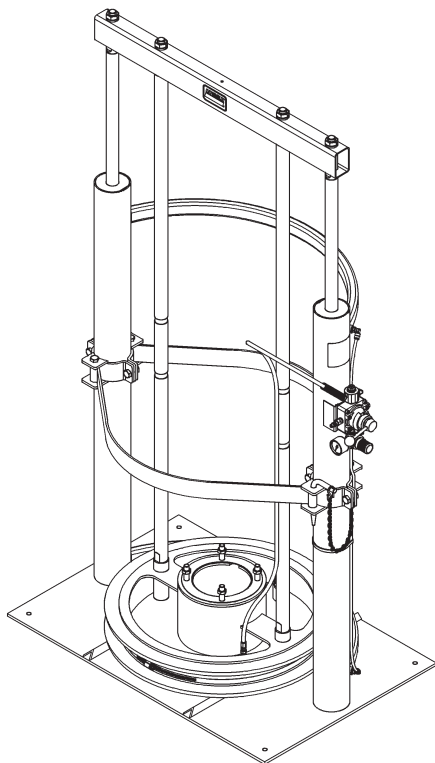


Pressure primer

Models 1735, 1736 and 84114, series “H”

Model 1735 - 400 lb. drum primer for PileDriver pumps

Model 1736 - 400 lb. drum primer for PowerMaster pumps



Date of issue	December 2013
Form number	402139P
Section	A32
Page	3P

WARNING

Read manual prior to installation or use of this product. Keep manual nearby for future reference. Failure to follow instructions and safety precautions may result in death or serious injury.

Specifications

Maximum air pressure	150 psi (10 bar)
Priming pressure at 100 psi (6,9 bar)	3 psi (0,2 bar)
Raised height	103 in. (2,6 m)
Lowered height	68 7/8 in. (1,75 m)
Base dimensions	36 x 24 in. (0,91 x 0,61 m)

Description

Model 1735 Twin post pressure primer provides priming assistance when dispensing highly viscous materials.

The dual lip follower wipes the container wall clean and prevents material from extruding past the follower in the rolled chime areas and in areas with slightly dented surfaces.

Vertical movement is controlled by a manual four-way air valve. Directly above the four-way valve is a push button valve which, when depressed, directs air to the underside of the follower to assist in its withdrawal from the drum. Below the four-way valve is an air regulator to regulate the priming pressure.

WARNING

*Do not use any container that is not standard size. Do not use any containers without ribs unless hold down strap kit 84503 is used. Use of containers without ribs (chimes) will prevent hold down straps from performing as designed and all material will not be removed from the container.

Hold down strap must be located above rib of container. Locking pin must be inserted into clamp weldment and strap.

Do not exceed maximum air pressure of 150 psi (10 bar).

Do not attempt to raise follower without pressing air assist valve button.

*Do not allow any portion of body to come into contact or near pressure primer assembly after pressing air assist valve and 4-way air valve when follower nears top of barrel. As follower exists container, injury can occur when follower releases from container.

Failure to comply may result in serious injury or death.

Installation

Before loading drum into pressure primer elevator, bolt the base of the elevator to the concrete floor that is at least 3 in. (76 mm) thick. The concrete anchors (277665, not shown in drawing) are $\frac{3}{8}$ in.-16 thread for 3 in. (76 mm) deep holes. Place pressure primer elevator where desired. Drill 4 holes, at least 3 in. (76 mm) deep, using the holes in the base as a pattern. Blow all dust from drilled holes.

With washer and nut flush with end of anchor, insert anchor into holes until washer is flush with the base. Secure anchor by tightening the nut 3 to 5 turns past the hand tight position. After the nuts are tightened, make sure that the ends of the bolts do not extend above the ribs of the base so that they do not get in the way of loading or unloading the container.

* Indicates change

Operation

To lower the pressure primer into a drum, loosen the priming probe located in the pump flange. Then, rotate the four-way valve handle downward to direct compressed air above the twin air pistons, lowering the follower. After all air has escaped from beneath the follower, tighten the priming plug (60).

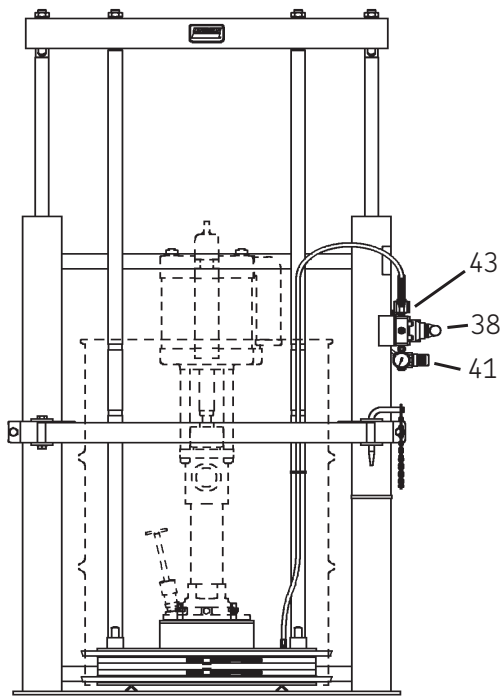
Adjust the air regulator on the pressure primer to set the priming pressure. Use only enough air pressure to allow the pump to prime. Excessive air pressure will cause the material in the drum to extrude past the follower rings. The regulator controls only the priming pressure and does not regulate the pressure to extract the follower. Leave valve handle in downward position while dispensing from drum.

To remove the follower from the drum, rotate the four-way valve handle upward. Depress the push button valve to provide an air assist under the follower. Without this air assist, a vacuum forms under the follower, retarding upward movement.

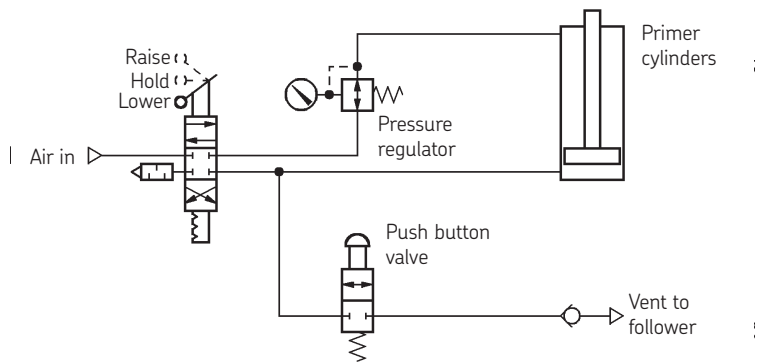
As the pump and follower are raised, the hold down strap will keep the drum from lifting off the platform.

The four-way valve has a positive neutral position which permits stopping the follower in any position. The follower will remain in position even if the airline is disconnected.

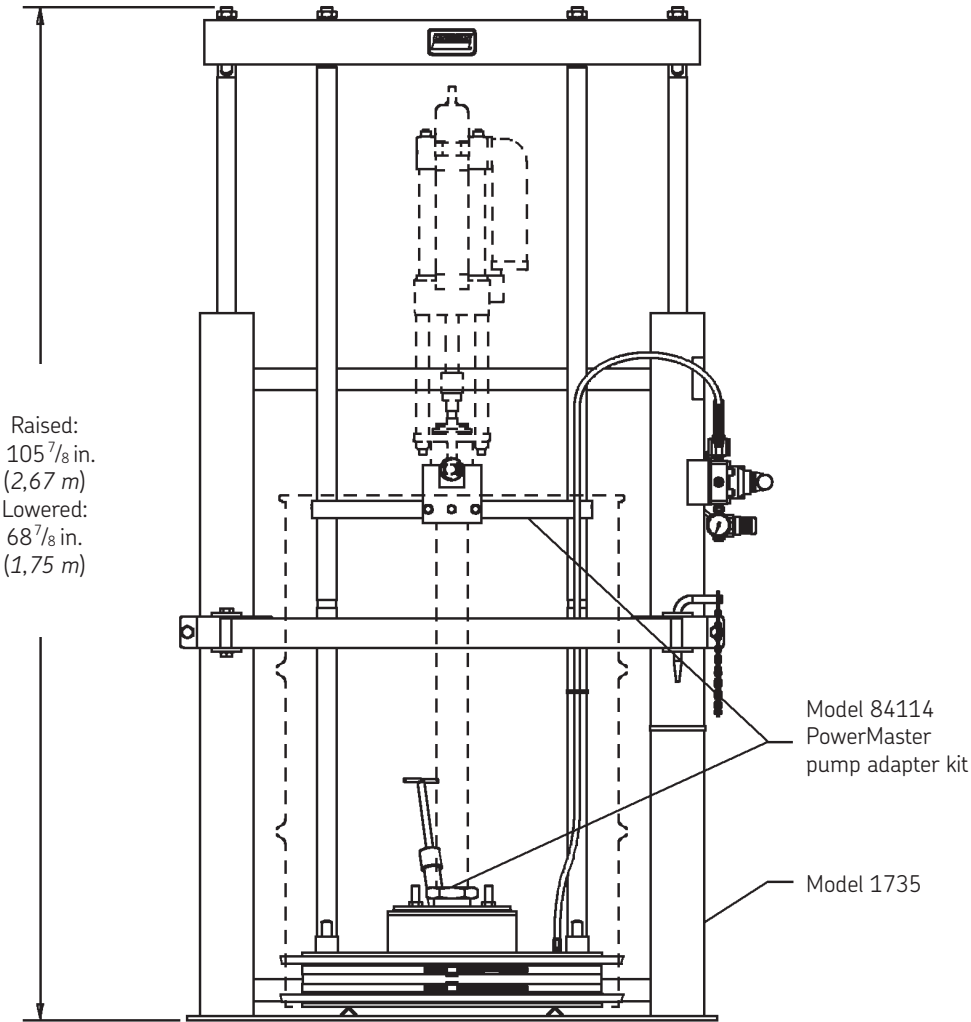
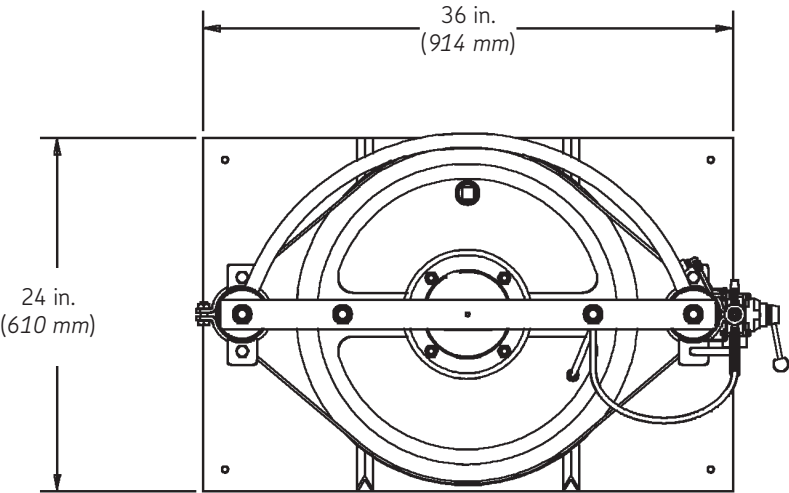
Model 1735 (for PileDriver pumps)

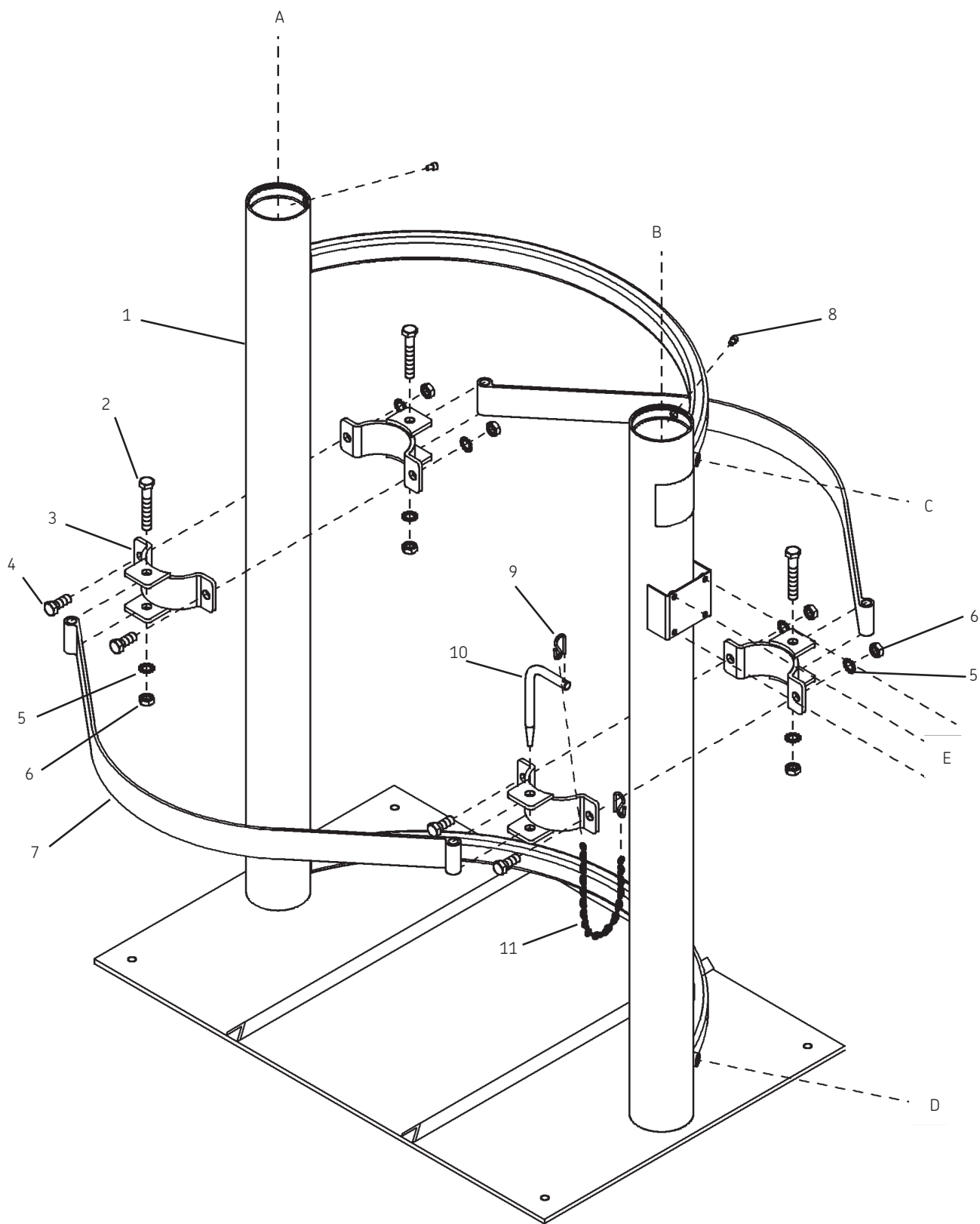


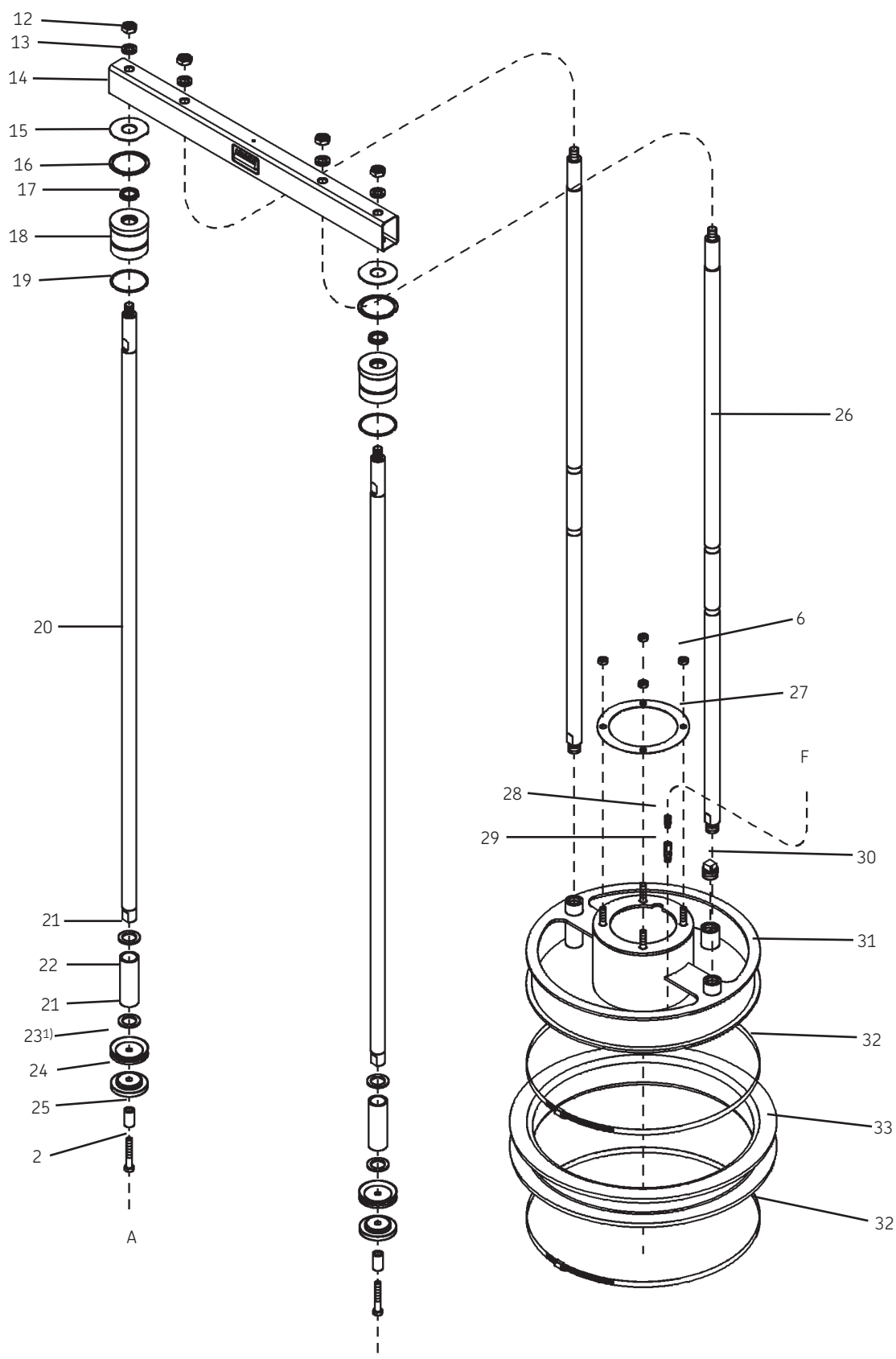
Pneumatic diagram



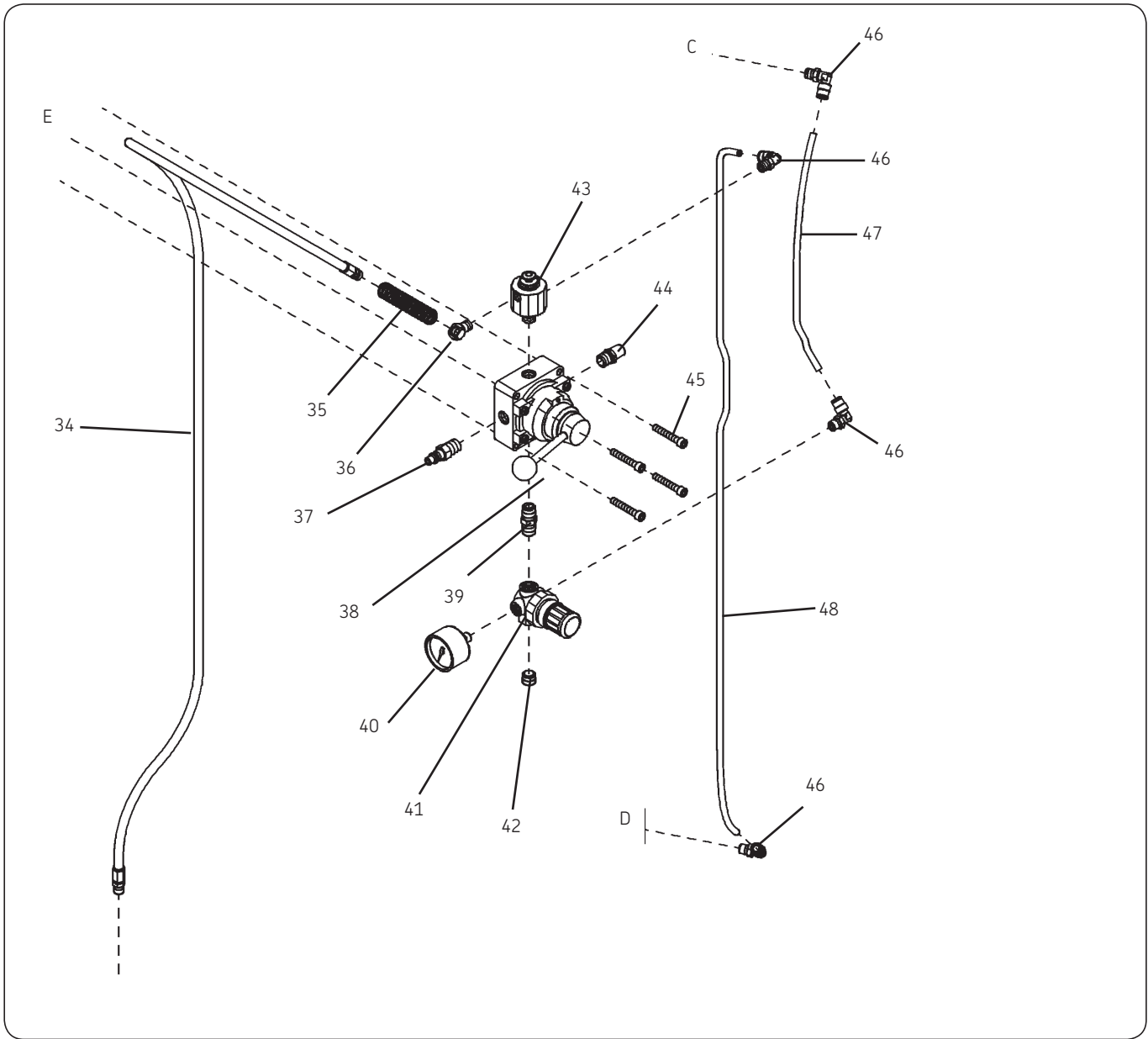
Model 1736 (for PowerMaster pumps)



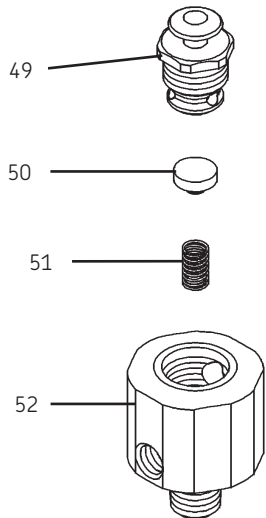




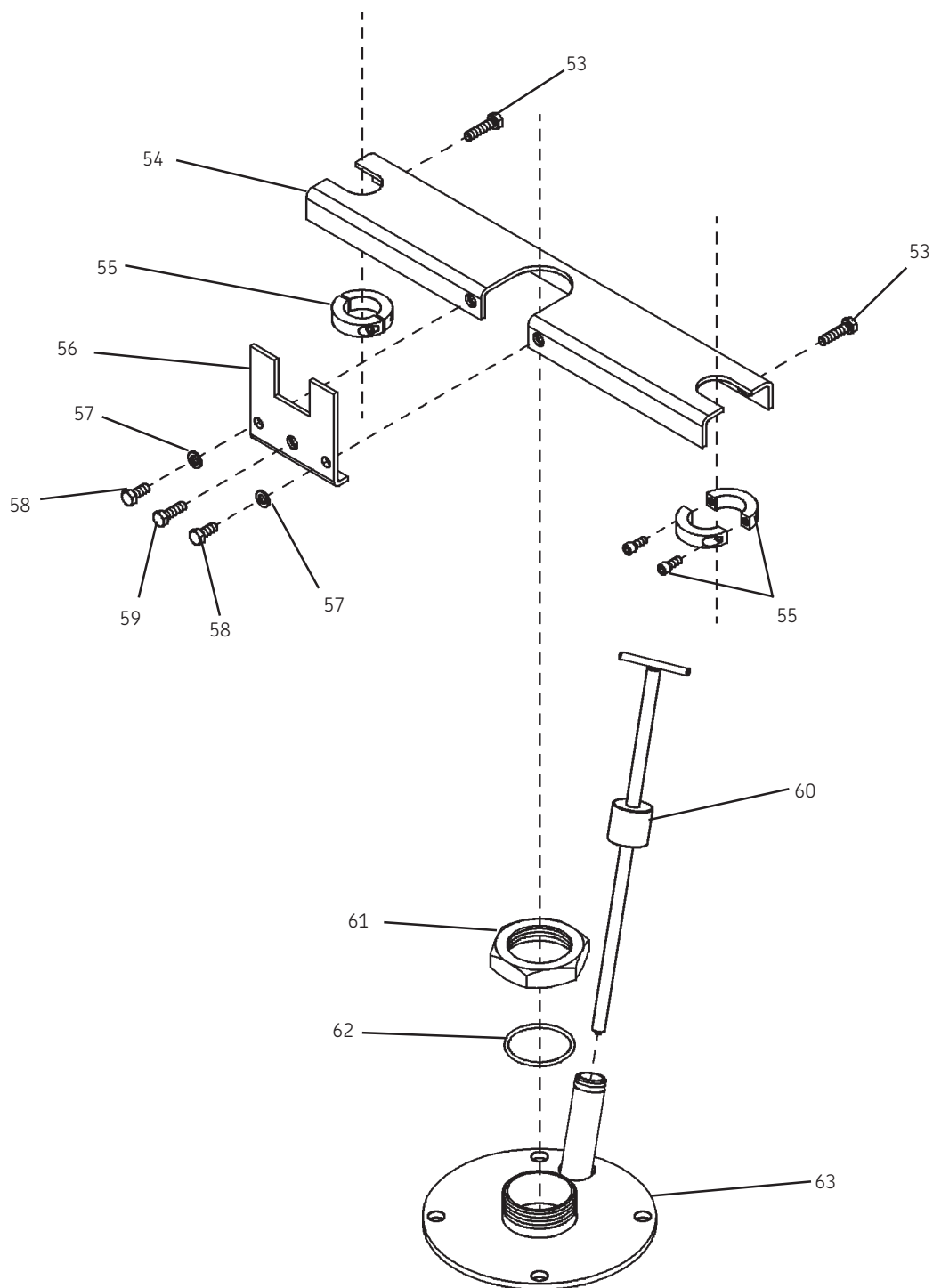
¹⁾ Apply Whitmore Matrix EP-1 grease to rods and pistons before installation. Use of silicone lubricants prohibited.



83784 air valve (43)



84114 adapter kit for PowerMaster pumps



Service parts

Item no.	Description	Part no.	Qty.	Item no.	Description	Part no.	Qty.
1	Baseplate	272862	1	34	Hose assembly ($\frac{3}{16}$ in. (4,76 mm) I.D.)	237172	1
2	Hex head screw ($\frac{1}{2}$ -13 x 3 in.)	272855	2	35	Spring	55244	1
3	Clamp weldment	272917	2	36	Angle body (45 degrees)	20028	1
4	Hex head screw ($\frac{1}{2}$ -13 x 1 $\frac{1}{4}$ in.)	50068	4	37	Air nipple	244870	1
5	Lock washer	66092	7	38	Manual valve	237588	1
6	Hex nut ($\frac{1}{2}$ -13)	51085	11	39	Nipple	10462	1
7	Strap	360615	2	40	Pressure gauge	247843	1
8	Socket head screw ($\frac{1}{4}$ -20 x $\frac{3}{8}$)	50844	2	41	Air regulator	602003	1
9	S-hook	68592	2	42	Pipe plug ($\frac{1}{4}$ in. NPTF)	67359	1
10	Pin	16530	1	43	Air valve	83784	1
11	Chain	68593	1	44	Muffler	241691	1
12	Hex jam nut ($\frac{3}{4}$ -16)	51017	4	45	Screw (4-way valve mounting)	50051	4
13	Lock washer	66193	4	46	Tube fitting ($\frac{1}{4}$ t x $\frac{1}{8}$ p elbow)	243699	4
14	Support beam	272850	1	47	Tube ($\frac{1}{4}$ in. (6,35 mm) polyurethane x 11 in. (279,4 mm))	272916	1
15	Washer	272858	2	48	Tube ($\frac{1}{4}$ in. (6,35 mm) polyurethane x 38 in. (965,2 mm))	272915	1
16	Retaining ring	244997	2	49	Valve assembly	93502	1
17	U-cup wiper	272860	2	50	Packing	34143	1
18	Bushing	272857	2	51	Spring	55161	1
19	O-ring (nitrile)	34414	2	52	Valve body	14469	1
20	Piston rod	272851	2	53	Hex head screw ($\frac{5}{16}$ -24 x 1 $\frac{1}{4}$ in.)	50142	2
21	Gasket (neoprene)	34340	4	54	Channel assembly	93604	1
22	Spacer	272852	2	55	Shaft collar	272967	2
23	Piston cup	272856	2	56	Support bracket assembly	93603	1
24	Piston guide	272859	2	57	Lock washer	66246	2
25	Spacer	272854	2	58	Hex head screw ($\frac{5}{16}$ -24 x $\frac{3}{4}$ in.)	50139	2
26	Tie rod	272853	2	59	Hex head screw ($\frac{5}{16}$ -24 x 1 in.)	50029	1
27	Follower gasket	33072	1	60	Priming plug	93075	1
28	Adapter union	66649	1	61	Gland nut	13266	1
29	Line check	83995	1	62	O-ring (nitrile)	34337	1
30	Pipe plug (1 in. NPTF)	67346	1	63	Adapter plate	91629	1
31	Follower plate weldment	272905	1				
32	Follower wiper clamp	272914	2				
33	Follower wiper	272596	1				

Troubleshooting

Problem	Solution
Unit	Air pressure too low.
<ul style="list-style-type: none"> seems bouncy will not lower will not raise properly 	<ul style="list-style-type: none"> Cylinders need lubrication (squirt a couple shots of 30 weight oil into the air nipple and operate the unit through a complete cycle.

Lincoln industrial standard warranty

Standard limited warranty

Lincoln warrants the equipment manufactured and supplied by Lincoln to be free from defects in material and workmanship for a period of one (1) year following the date of purchase, excluding there from any special, extended, or limited warranty published by Lincoln. If equipment is determined to be defective during this warranty period, it will be repaired or replaced, within Lincoln's sole discretion, without charge.

This warranty is conditioned upon the determination of a Lincoln authorized representative that the equipment is defective. To obtain repair or replacement, you must ship the equipment, transportation charges prepaid, with proof of purchase to a Lincoln Authorized Warranty and Service Center within the warranty period.

This warranty is extended to the original retail purchaser only. This warranty does not apply to equipment damaged from accident, overload, abuse, misuse, negligence, faulty installation or abrasive or corrosive material, equipment that has been altered, or equipment repaired by anyone not authorized by Lincoln. This warranty applies only to equipment installed, operated and maintained in strict accordance with the written specifications and recommendations provided by Lincoln or its authorized field personnel.

This warranty is exclusive and is in lieu of any other warranties, express or implied, including, but not limited to, the warranty of merchantability or warranty of fitness for a particular purpose. Warranty on items sold by Lincoln, but not manufactured by Lincoln are subject to the warranty consideration, if any, of their manufacturer (such as hoses, hydraulic and electric motors, electrical controllers, etc.) Assistance in making such warranty claims can be offered as required.

In no event shall Lincoln be liable for incidental or consequential damages. Lincoln's liability for any claim for loss or damages arising out of the sale, resale or use of any Lincoln equipment shall in no event exceed the purchase price. Some jurisdictions do not allow the exclusion or limitation of incidental or consequential damages, therefore the above limitation or exclusion may not apply to you.

This warranty gives you specific legal rights. You may also have other rights that vary by jurisdiction.

Customers not located in the Western Hemisphere or East Asia: Please contact Lincoln GmbH and Co. Kg, Walldorf, Germany, for your warranty rights.

Special limited warranties

Special limited 2 year warranty SL-V series, single injectors – 85772, 85782, and replacement injectors – 85771, 85781

Lincoln warrants the SL-V Injector series to be free from defects in material and workmanship for two (2) years following the date of purchase. If an injector model (single or replacement) is determined to be defective by Lincoln, in its sole discretion, during this warranty period, it will be repaired or replaced, at Lincoln's discretion, without charge.

Special limited 5 year warranty series 20, 25, 40 bare pumps, pmv bare pumps, heavy duty and 94000 series bare reels

Lincoln warrants series 20, 25, 40 bare pumps, PMV bare pumps, heavy duty (82206), mini bench (81133, 81323), and all 94000 LFR series (single arm and dual arm) bare reels to be free from defects in material and workmanship for five (5) years following the date of purchase. If equipment is determined by Lincoln, in its sole discretion, to be defective during the first year of the warranty period, it will be repaired or replaced at Lincoln's discretion, without charge. In years two (2) and three (3), the warranty on this equipment is limited to repair with Lincoln paying parts and labor only. In years four (4) and five (5), the warranty on this equipment is limited to repair with Lincoln paying for parts only.

Special limited 5 year warranty limited oil meters, limited fluid control valves, aod (air-operated diaphragm pumps)

Lincoln warrants the 712 series control valves, 912 series lube meters, electronic lube meters (980, 981, 982 series), our universal inline digital meters (812/813 series), and our AOD pump offering to be free from defects in material and workmanship for five (5) years following the date of purchase. If either is determined to be defective by Lincoln, in its sole discretion, during the warranty period, they will be repaired or replaced, at Lincoln's discretion, without charge.

Special DEF (diesel exhaust fluid) limited warranty

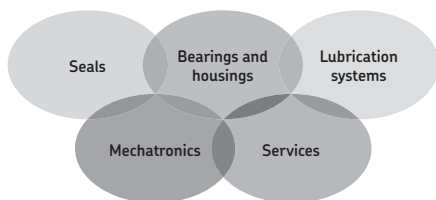
DEF products are warranted to be free from defects in material and workmanship for a period of one (1) year following the date of purchase. The following exceptions to the standard warranty period are in effect:

- **85700-30/85700-50 DEF hose reels (bare reel only),**
277251/277252 AC DEF pumps, and 277256 and 277257 DEF meters are warranted for two (2) years from date of purchase.
- **85623 DEF AOD (air operated diaphragm) pumps**
are covered under the standard five (5) year AOD pump warranty.

If either is determined to be defective by Lincoln, in its sole discretion, during the warranty period, they will be repaired or replaced, at Lincoln's discretion, without charge.

Lincoln Industrial contact information

To find Lincoln Industrial's nearest service center call the following number; customer service 314-679-4200 (international number 01-314-679-4200) or you may also use our website www.lincolnindustrial.com



The Power of Knowledge Engineering

Combining products, people, and application-specific knowledge, SKF delivers innovative solutions to equipment manufacturers and production facilities in every major industry worldwide. Having expertise in multiple competence areas supports SKF Life Cycle Management, a proven approach to improving equipment reliability, optimizing operational and energy efficiency and reducing total cost of ownership.

These competence areas include bearings and units, seals, lubrication systems, mechatronics, and a wide range of services, from 3-D computer modelling to cloud-based condition monitoring and asset management services.

SKF's global footprint provides SKF customers with uniform quality standards and worldwide product availability. Our local presence provides direct access to the experience, knowledge and ingenuity of SKF people.

© SKF is a registered trademark of the SKF Group.

© Lincoln is a registered trademark of Lincoln Industrial Corp.

© SKF Group 2013

The contents of this publication are the copyright of the publisher and may not be reproduced (even extracts) unless prior written permission is granted. Every care has been taken to ensure the accuracy of the information contained in this publication but no liability can be accepted for any loss or damage whether direct, indirect or consequential arising out of the use of the information contained herein.

SKF PUB LS/I4 14305 EN • December 2013 • Form 402139P

LINCOLN

